






The Biodiversity Management Data

Target and indicators


SUTHA has Monitoring progress in biodiversity action to jointly develop and drive positive biodiversity, SUTHA has set the following targets:

Report on		Year 2024	
Biodiversity Target		Data source	Indicators
	Biodiversity Check /1 Core production Area assessed every 3 years / or as appropriate or when there is a new project or property or there is a significant change.	<ul style="list-style-type: none"> - Registration area, factory operating license - Location map, main activities - Environmental Audit Checklist - Animal and plant conservation account information and registration of conservation areas, forest reserves or important heritage sites in each area 	<ul style="list-style-type: none"> - Distance between 1 , 5, 10, 20, 25 km. from the protected area
		Target	Performance
		100%	100%
	A process/project that restores biodiversity or restores the environment from the results of operations and use of land or resources according to the rehabilitation plan of the project or area specified in accordance with environmental management measures.	<ul style="list-style-type: none"> - Number of projects with annual implementation plans - Implementation of the plan 	<ul style="list-style-type: none"> - Percentage of plan implementation
		Target	Performance
		- Area of the concession number 32499/15852 Khao Ngob	- Planting a total of 446 trees as per the plan, with a budget of 68,000 baht.
		- Area of the concession number 32517/16065 Khao Khao	- Planting a total of 108 trees as per the plan, with a budget of 39,240 baht.
	Area/project/process located in an area protected by IUCN / 2 definition. (project)	<ul style="list-style-type: none"> - Site inspection According to the specified distance and criteria 	<ul style="list-style-type: none"> - Number of projects or establishments located within a distance from the protected area
		Target	Performance
		- No project in IUCN area	- No project in IUCN area
	Collaborating with external organizations to create positive biodiversity or engaging stakeholders in management, promoting the increase of green spaces and promoting sustainable ecosystems.	<ul style="list-style-type: none"> - Plans and activities related to the promotion of biodiversity, environmental impact mitigation, or related matters. 	<ul style="list-style-type: none"> - Number of projects - Expenditure budget - Benefits
		Target	Performance
		- Organize and participate in environmental initiatives like tree planting and biodiversity projects.	Tree planting project to reduce environmental impact June 2024/and
	managing impacts on biodiversity and create opportunities from biodiversity value with offering products to reduce environmental impacts.	<ul style="list-style-type: none"> - Sales volume of products in groups that promote the environment, 	Proportion of sales of environmentally friendly products and products that promote sustainable living

Information on other environmental management

https://www.goldenlime.co.th/Managing_biodiversity.asp?lang=E

Year	Target - compared to the previous year	Performance	+/-
2022	Upward trend	43%	-4%
2023	Upward trend	53%	+10%
2024	Upward trend	50%	-3%

 <p>Adequate information is accessible, and the communication and sharing of biodiversity management data are conducted in compliance with relevant standards.</p>	<p>agriculture, food and the promotion of good life</p>	<p>agriculture, food and the promotion of good life</p>	<p>agriculture, food and the promotion of good life</p>
	<ul style="list-style-type: none"> - Preparation of biodiversity assessment reports - Disclosure of biodiversity performance data - Channels for receiving complaints regarding violations related to biodiversity 	<ul style="list-style-type: none"> - Complaints related to biodiversity and complaints about business process impacts - Sustainability assessment results on biodiversity operations 	
	<p>Target</p> <ul style="list-style-type: none"> - Completed Evaluation report - Successful Annual data disclosure - No complaints about biodiversity 	<p>Performance</p> <ul style="list-style-type: none"> - Y2024 report prepared. - Y2024 disclosure in the Annual report - No complaint in Y2024 	

Management Approach and Strategy

Commitment to biodiversity management

SUTHA, as an organization, that dedicates to manufacturing products and providing services that convey the value and advantages to the production sectors, encompassing both industry and agriculture, both domestically and internationally. Recognizing the significance of biodiversity, the Company integrates its operations and practices within the context of its business activities by formulating a development plan that aligns with the objectives outlined in the National biodiversity strategies and action plan.

The Office of Natural Resources and Environmental Policy and Planning (ONEP) has disclosed the international cooperation framework that emerged from the Kunming-Montreal Global Biodiversity Framework meeting held on January 30, 2023. The summary of the collaborative biodiversity framework among the conference participants is categorized into three distinct groups;

1. Mitigate risks to biodiversity by enhancing and expanding regions rich in biodiversity, minimizing pollution, and eradicating invasive alien species that pose a threat to ecological balance.
2. Ensure the sustainable utilization of biodiversity through the adoption of bio-based products and the environmentally responsible management of agricultural and fishery sectors.
3. Establish frameworks to encourage the integration of biodiversity considerations across all sectors, fostering inclusive participation.

The ONEP has established a national strategy to drive biodiversity. 2023 – 2047 (Long-term Strategy Approach to Mainstreaming Biodiversity of Thailand) consists of:

- Strategy 1:** Promote biodiversity by ensuring that all relevant government agencies actively implement policies at the governmental level.
- Strategy 2:** Integrate biodiversity into the operations and practices of the business sector, particularly in key economic areas such as agriculture, services, industry, and finance.

Strategy 3: Foster biodiversity within society to enhance the quality of life and overall well-being for all individuals.

The Company is dedicated to the principles of sustainability development. On November 10, 2023, the Board of Directors endorsed the Sustainability Development and Environmental and Social Responsibility Policy, which establishes a framework for environmental management and the integration of biodiversity (E 6). This policy outlines guidelines for managing biodiversity as an integral component of sustainable environmental development.

Principle

As the business activities of the Company and its subsidiaries are related to resource groups and rely on natural resources for production, which in the business area may affect and/or create an impact on the ecosystem, the Company has established management guidelines to prevent risks that may arise from violating regulations that may affect the ability to renew the licenses for business operations of the Company and its subsidiaries, including preventing damage to reputation, and has established business guidelines to be consistent with the guidelines for preserving the ecosystem and biodiversity.

Guidelines

1. The Company has established and disclosed a biodiversity policy that recognizes and aims to reduce impacts from business operations and promotes and places importance on the maintenance of biodiversity. It is considered a business responsibility and one of its duties to help drive development to maintain and return value to the ecosystem and to place importance on restoring nature and enhancing biodiversity, including the life cycles related to the ecosystem (Ecosystem) which are related to the Company's business operations. It has set guidelines to support biodiversity management and set guidelines for land use of the Company.
2. Actions are being taken to preserve or protect biodiversity. or there is restoration of the natural environment or ecosystem in the activities or departments that may be affected by the business process

Governance Structure

Formulate practices for the oversight and assessment of environmental management, ensuring that biodiversity initiatives are integrated into the development processes guided by the environmental policies of the Company and its subsidiaries. The collaborative supervision and execution include:

Board of Directors

1. Evaluate, endorse, and assess existing biodiversity management policies and guidelines that align with environmental conditions and risk factors, encompassing business activities and stakeholders across the value chain, with periodic reviews as necessary.
2. Oversee business operations to ensure adherence to applicable laws, regulations, policies, and practices, while actively encouraging the practical application of these policies.
3. Guide and assist management in performing a Biodiversity Check to guarantee effective risk management.
4. Review the proposed annual biodiversity performance outcomes and offer recommendations that may assist management in fostering appropriate development and enhancement.
5. Advocate for and assist management in integrating biodiversity management into the organizational operational culture.

Executives

1. Develop criteria, procedures, and guidelines for conducting biodiversity analysis and assessment (Biodiversity Check), ensuring that biodiversity management guidelines are tailored to the specific context and comply with the relevant policies, procedures, and laws of the country where the business operates.
2. Create an organizational framework that defines clear responsibilities and roles, while ensuring the allocation of adequate and appropriate resources.
3. Set forth objectives, targets, strategies, plans, and indicators to facilitate effective and comprehensive biodiversity management.

4. Oversee, manage, and assist employees, business partners, allies, and key stakeholders in adhering to laws, policies, measures, and regulations pertaining to biodiversity, while enhancing practices for improved efficiency.
5. Foster and advocate for a culture of ecosystem and biodiversity protection by effectively communicating the importance of these values to all employees and relevant stakeholders.
6. Prepare performance reports detailing the outcomes of biodiversity initiatives for presentation to the Board and stakeholders.
7. Establish mechanisms for reporting and addressing complaints regarding breaches of biodiversity management, including procedures for complaints and protections for whistleblowers, complainants, and reporters.

Designated personnel for environmental matters or the Risk Management and Sustainability Development Committee.

1. Develop clear strategic plans, action plans and biodiversity management measures that are consistent with the business context.
2. Establish a process for disclosing and reporting biodiversity management information that is clear, transparent and accountable.
3. Conduct a biodiversity assessment (Biodiversity Check) and provide guidelines for prevention and mitigation of actual or potential impacts.
4. Report information on significant biodiversity issues (if any) to the management regularly and report immediately when any unusual events occur.
5. Internal control, risk management and monitoring of policy compliance to ensure efficiency and strictness, including reporting and following up with relevant departments to ensure regular adjustments.
6. Monitor, inspect, collect data and prepare reports on biodiversity management, as well as manage disclosure of information to the Company's executives, board of directors and stakeholders on an annual basis in order to comply with the framework set by regulatory agencies.
7. Coordinate and integrate cooperation with relevant individuals, agencies or stakeholders to jointly determine measures, management, control mechanisms, responses and problem solving.
8. Participate in reviewing biodiversity policies to ensure compliance with relevant laws, regulations, practices and standards.

Employee

1. Learn, understand and comply with relevant laws, regulations, rules, policies and practices, including standards.
2. Communicate and transfer knowledge about the company's biodiversity policies and goals to business partners, customers, communities, business partners and relevant stakeholders.
3. In the event of observing any misconduct or actions that could potentially breach the policy, kindly submit the information or file a complaint via the company's whistleblowing channel.

SUTHA 's sustainability “ We contribute to a better world.”		
SUTHA 's Biodiversity Management Objectives and Strategies		
E Mitigate risks to biodiversity	S Sustainable use and promote sustainable society and consumption	G Encourage the integration of biodiversity considerations across all sectors, fostering inclusive participation
<ol style="list-style-type: none"> 1 Biodiversity Check is conducted at business establishments and kept reassessed as needed, especially when new projects or assets are located or when significant changes occur. 2 Oversee environmental restoration efforts based on established plans and strategies to prevent and reduce impacts from land or resource utilization. 3 Refrain from engaging in business or investing in areas, projects, or processes situated in protected regions as classified by the IUCN. 	<ol style="list-style-type: none"> 4. Partnering with external organizations to enhance biodiversity, involving stakeholders in management efforts, expanding green spaces, and fostering sustainable ecosystems. 	<ol style="list-style-type: none"> 5. Adhere to all laws, regulations, and mandatory standards concerning biodiversity and forests. 6. Implement land use and operational management strategies to prevent and reduce impacts on biodiversity. 7. Utilize a "tiered mitigation" strategy that prioritizes avoiding significant impacts, minimizing effects through operational improvements, and restoring or offsetting any losses. 8. Incorporate biodiversity value opportunities into SUTHA's business growth and marketing strategy. 9. Ensure that adequate information is accessible and that biodiversity management details are communicated and disclosed according to relevant standards.

Communication, policy communication channels and training

The Company disclosed its Biodiversity Policy through its website and electronic communication methods, such as email, while also storing it in a Share Folder that contains various company policies. Key individuals within the organization, including directors, executives, and staff, will receive policy documents through suitable internal communication channels. These individuals can access information for training purposes. The HR department will conduct orientation sessions to familiarize employees with the Company's policies, ensuring they understand the best practices. Additionally, designated personnel will effectively communicate with relevant stakeholders and choose suitable methods to share knowledge about biodiversity, enhancing employees' understanding of the topic such as https://www.youtube.com/watch?v=Rf_e9bDz2QM8 or <https://www.facebook.com/watch/?v=1418018581586465> <https://www.youtube.com/watch?v=kaJFJ3-jlgs>

Whistleblowing

All who observe actions that could potentially breach the policy are encouraged to submit a complaint and provide information via the following channels:

<p>https://www.goldenlime.co.th/complaints</p> <div style="border: 1px solid black; border-radius: 15px; padding: 10px; background-color: #e6f2ff;"> <p style="text-align: center;">Whistleblowing & Complaint</p> <div style="display: flex; align-items: center;"> <div style="text-align: left;"> <p>สแกนเพื่อเข้าสู่ระบบ แจ้งเบาะแส หรือ ช่องทางร้องเรียน</p> <p>EN Select Language / เปลี่ยนภาษา</p> </div> </div> </div> <p>The procedure will adhere to the Whistle-blowing Policy. The individual making the complaint or acting as a whistleblower will receive protection, and all information will remain confidential, ensuring that their position and compensation are not impacted during the investigation and after its conclusion.</p>	<p>Contact Location</p> <p>GOLDEN LIME PUBLIC COMPANY LIMITED Internal Auditor/Internal Auditor Coordinator 7 Soi 11, Sai 3, Moo 12, New Saraburi-Lom Sak Chong Sarika Subdistrict Phatthana Nikhom District Lopburi 15220</p> <p>Phone: 036-436 178 Email: complaint@goldenlime.co.th</p> <p>The secretary to the audit committee 89, Cosmo Office Park, 6th Floor, Unit H, Popular Road, Banmai Sub-district, Pakkret District, Nonthaburi Province 11120 Tel. 0 2017 7461-3 Fax.0 2017 7460 E-mail : complaint@goldenlime.co.th</p>
---	--

Punishment

The Biodiversity Policy is a fundamental component of the Company's operational framework, which Directors, Executives, and Employees shall follow as part of established policies and procedures. Any breach or failure to comply with this policy will lead to penalties for actions that contravene the Company's policies or procedures.

Performance and previous initiatives

- In 2024, the company successfully managed the documentation of its policies and statements of intent related to biodiversity. It carried out biodiversity assessments and presented the resulting policies, management plans, and strategies, along with the biodiversity assessment report, at the board meeting held on November 8, 2024.

Biodiversity Policy and Statement	Biodiversity Check Report
Link: https://www.goldenlime.co.th/Managing_biodiversity	

Assessment of risks and impacts on biodiversity

- 1.1) The property's location and proximity to protected areas, involving an assessment of its geographical position relative to national parks, wildlife sanctuaries, forest parks, non-hunting zones, and marine protected areas

Result : Non - Impact

The survey conducted on the locations of assets utilized for primary business operations and production processes, which engage with the ecosystem and resource utilization, has identified a total of 11 sites, including head offices and branches. Notably, all 11 sites, encompassing both factory locations and areas designated for limestone and marble quarrying, are situated at a considerable distance from national forest reserves, with the nearest reserve being over 200 kilometers away. Furthermore, these locations are not situated within protected areas or regions characterized by high biodiversity, such as national parks, wildlife sanctuaries, forest parks, non-hunting zones, marine and coastal protected areas, or any areas that may be adjacent to or potentially impact biodiversity protected under international law.

- 1.2) Reliance on ecosystem services, freshwater supplies, and the utilization of natural resources or assets, including land, minerals, energy, and fuels.

Result: Business operations rely on ecological services, including fresh water from underground reserves.

- 1.3) Plant and animal species on the IUCN Red List in the specified areas within the scope of the provinces of the business establishments

Result: The Company has not conducted a survey in the area to assess the distribution of the mentioned plant species. In terms of production and related processes, there is no utilization of raw materials or any materials that may include species or plants listed for conservation. To reduce impact, the Company plans to utilize the data from the survey to collaborate with local agencies for future management strategies.

- 1.4) Water stress in the area and the risk of water shortages (From tools and from areas and business impacts)

Risk and impact assessment on water shortage in SUTHA 's business processes : The Department of Groundwater Resources, under the Ministry of Natural Resources and Environment, has released a report based on a survey of groundwater sources in Phatthana Nikhom District. This report compares the survey data with published sources to evaluate water use stress, which refers to the ratio of water withdrawal to the total available water in the area. It also assesses the availability of fresh water for local use and maps potential water-related risks for SUTHA's operations. The findings indicate that SUTHA is not significantly impacted by water resource shortages. This conclusion aligns with the groundwater depletion assessment from the Ground Water Table Decline Risk (Water Risk Atlas Tool), which shows that groundwater depletion levels are not significantly reduced. The Lopburi Province benefits from surface water due to local rainfall and water storage from the Pasak Jolasid Dam, as well as overflow from the coast, all of which contribute to groundwater replenishment.

- 1.5) Pollution from business processes and there are measures to monitor and control and inspection from certified external agencies.

Result: In 2024, two locations received four complaints about dust pollution affecting the community. All complaints were resolved without any environmental disputes or negative consequences.

- 1.6) “Hierarchical mitigation” measures ranging from avoiding severe impacts, minimizing impacts by improving operations, restoring and compensating for losses.

Mitigation measures for Water Depletion Risk

- 1) Develop guidelines for managing water resources and implement strategies to oversee water usage, enhance water recycling, and minimize water consumption.
- 2) The issue of freshwater scarcity due to limited tap water availability has been mitigated by obtaining authorization to access underground freshwater sources from the Department of Groundwater Resources. Requests have been made to drill artesian wells in various locations to serve as a freshwater supply for both consumption and production needs.
- 3) Ensure the provision of drinking water that complies with consumption standards as a benefit for employees, while also supporting local drinking water preferences, which are vital for public services, including distribution to community service points or agencies.
- 4) Water management practices are aligned with the principles of a circular economy, focusing on reducing water consumption, enhancing the use of recycled water, and improving the system for storing used water in lime sedimentation ponds for future reuse.
- 5) Establish preventive strategies to ensure that high-alkalinity water from the production process is not released into the environment.

Mitigation on Dust pollution

In addition to setting up equipment for pollution control, ISO international management standards serve as a framework for management practices.

- Comply with applicable environmental laws and regulations.
- Conduct environmental quality assessments as mandated by law.
- Implement closed systems for operations that may produce dust and noise.
- Install a water spray system to manage dust in raw material storage areas and to clean truck wheels.
- Set up a Slan installation as a dust protection measure.
- Use water spraying and cleaning methods to minimize dust accumulation on the Slan, trees, and the factory's surrounding areas.
- Establish a cover system to shield moving or transporting points to limit dust dispersion.
- Regularly inspect and repair any parts of the process system and machinery that could be damaged, leading to dust leaks or spread.
- Plant trees strategically to mitigate dust around the factory.
- Utilize solar energy to address environmental issues.
- Manage resources effectively.
- Reuse renewable resources.
- Designate a responsible individual and management system, including structured measures to address issues and complaints promptly.

Mitigation on Carbon emissions

- Establishing policies for effective Climate Change management.
- Investing in solar power generation to enhance carbon offsetting.
- Monitoring greenhouse gas emissions to identify reduction strategies.
- Defining goals and executing initiatives to lower greenhouse gas emissions related to resource and energy management.
- Expanding green areas and encouraging community involvement in tree planting efforts that aid in carbon sequestration.

Mitigation on Change in utilizing land

- Control and supervision are in place to ensure proper compliance with laws and taxes.
- Management to comply with the Biodiversity Action Framework

Information on other environmental management

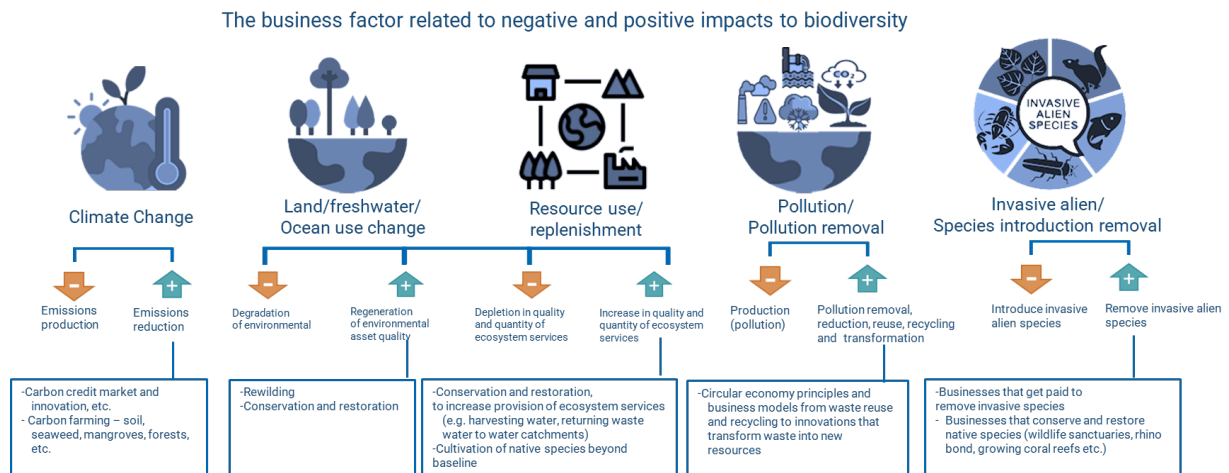
https://www.goldenlime.co.th/Managing_biodiversity.asp?lang=E

- proper land use management.
- Implementation of the plan for prevention and management of impacts, including monitoring of operations to ensure compliance with standards and compliance with relevant laws.
- Tree planting plans are being implemented, with trees being planted in planned areas to offset land use from mining processes.
- Monitoring is carried out to assess environmental quality according to specified criteria and standards.
- Processed water is controlled to prevent it from being discharged into public water sources.
- The quality of processed water and water quality from underground sources are monitored.

Mitigation on the utilization of natural resources

- Adherence to applicable laws and regulations has been confirmed, along with the complete and accurate payment of all associated fees.
- Resource utilization is being managed to ensure maximum benefit, with process controls established to address environmental, safety, and occupational health considerations.
- Efforts are underway to explore and secure sufficient reserves to fulfill the production plan.
- Sustainability development is being implemented.

2. The Company examines the relationship between its business activities and their effects on biodiversity and ecosystems to pinpoint potential risks and opportunities, which will lead to the development of business activities that consider the sustainable use of natural resources.



To develop management strategies for mitigating biodiversity risks and impacts through a collaborative stakeholder network. A comprehensive assessment of corporate responsibility for biodiversity has been created, which includes:

- 1) Strategy/Organization Management
- 2) Relevant stakeholders
- 3) Land, buildings and real estate
- 4) Procurement of raw materials, energy, water, etc.
- 5) Product development and production processes
- 6) Logistics and transportation system
- 7) Products and services
- 8) Sales and Marketing
- 9) Human resources

Details can be found in the Biodiversity Audit Report published on the website.

3. Announcement of the policy and training on biodiversity for employees and stakeholders, such as training employees and business partners of the company.

In 2024, training session focused on human rights, climate change, and biodiversity was arranged, involving employees from procurement, human resources, and core operations departments, as well as key business partners and contractors.



4. Manage the environmental restoration to prevent and mitigate impacts from land or resource use.

According to the rehabilitation targets and plans, including increasing green areas from land use according to the concession that Thai Marble Co., Ltd. (a subsidiary) has received a concession and license to use the land for marble and limestone mining.

During 2024, tree planting has been carried out according to the plan to restore and compensate for areas from land use as follows:

Concession No. 32499/15852

The concession period is 10 years, starting from 21 April 2009. Expiry date 20 April 2019.

The concession certificate has been renewed for another 15 years, starting on 21 April 2019. The expiration date is 20 April 2034.

Land use after mining ends: Developed as a public water source.

Date of operation: 18/7/2024

Results of rehabilitation at the mine site in 6 locations, area 2 rai.

Measure: Plant trees along the edge of the road leading up to the mine. The mineral transportation route and the edge around the concession line are an area of 2 rai.


Planting area at the foot of the mountain to the north

Types of trees planted:

Information on other environmental management

https://www.goldenlime.co.th/Managing_biodiversity.asp?lang=E

1. Bamboo, total 300 trees, total budget 28,929 baht
 2. Neem trees, total 123 trees, budget 32,161 baht
 3. Rain trees, total 23 trees, budget 6,910 baht
- Total tree planting to compensate and increase green areas, total 446 trees, total value 68,000 baht



การจัดการความหลากหลายทางชีวภาพ

โดยในระหว่างปี 2567 ได้มีการดำเนินการในการปลูกต้นไม้ตามแผนการฟื้นฟูและขุดเขยพื้นที่จากการใช้ประโยชน์ที่ดินแล้ว ดังนี้


ประธานบัตรเลขที่ 32499/15852
ว.ด.ป.ที่ดำเนินการ: 18/7/2567

พื้นที่ปลูกข เขิงเขาศศเหนือ
ประเภทต้นไม้ที่ปลูก:

1. ต้นไผ่ รวม 300 ต้น งบประมาณรวม 28,929 บาท
2. ต้นสะเดา รวม 123 ต้น งบประมาณ 32,161 บาท
3. ต้นทุกรอง รวม 23 ต้น งบประมาณ 6,910 บาท

รวมการปลูกต้นไม้ขุดเขยและเพิ่มพื้นที่สีเขียว รวม 446 ต้น
มูลค่ารวม 68,000 บาท

Part	Article	Photo Number
01	3.3 & 3.4	010332_001



Golden Lime Public Company Limited

การปลูกต้นไม้ การฟื้นฟู และการเพิ่มพื้นที่สีเขียวจากการใช้ประโยชน์ที่ดิน
ตามประธานบัตรที่ 32499/15852

The water circulation system for water treatment and recycle

1. Dredging sediment from the area of the 1 rai recycle water storage pond, with Daily dredging
2. Installing a filter press machine to treat water and recycle water for use in the process



Concession No. 32517/16065 Khao Khao

Concession period 20 years, starting from October 29, 2023, expiration date April 28, 2043

Land use pattern after the end of mining: Developed as a public water source

This area has been permitted to use forest land and the Phra Phutthabat Self-Reliance Settlement area

Date of operation: December 2024

Planting area, distance 200 meters, total number of trees planted 108 trees

Details and budget

1. Backhoe Zx200, 3.8 hrs., price 1,300 baht, total budget 4,940 baht
 2. Backhoe 130, 6 hrs., price 500 baht, total budget 3,000 baht
 3. Soil, 600 bags, price 8 baht, total budget 4,800 baht
 4. Neem trees, 100 trees, total budget 20,000 baht
 5. 1-inch Kuka wood, 200 pieces, price 10 baht, total budget 2,000 baht
 6. 1 box of nails, 180 baht, total budget 180 baht
 7. Cost of planting 108 trees, price 40 baht, total budget 4,320 baht
- Total operating budget 39,240 baht



ประธานบัตรเลขที่ 32517/16065 เขาขาว
 ว.ต.ป.ที่ดำเนินการ: ธันวาคม 2567
 พื้นที่ปลูก ระยะทาง 200 เมตร จำนวนต้นไม้ที่ปลูกรวม 108 ต้น

รายละเอียดการดำเนินการและงบประมาณ

1. แบริดเดอร์ Zx200 จำนวน 3.8 ชม. ราคา 1,300 บาท รวมงบประมาณ 4,940 บาท
2. แบริดเดอร์ 130 จำนวน 6 ชม. ราคา 500 บาท รวมงบประมาณ 3,000 บาท
3. ดิน จำนวน 600 ถุง ราคา 8 บาท รวมงบประมาณ 4,800 บาท
4. ต้นสะเดา จำนวน ต้น ราคา 100 บาท รวมงบประมาณ 20,000 บาท
5. ไม้คูกา 1 นิ้ว จำนวน 200 ท่อน ราคา 10 บาท รวมงบประมาณ 2,000 บาท
6. ตะปู 1 กล่อง จำนวน 180 บาท รวมงบประมาณ 180 บาท
7. ค่าจ้างปลูก 108 ต้น ราคา 40 บาท รวมงบประมาณ 4,320 บาท

รวมงบประมาณดำเนินการทั้งสิ้น 39,240 บาท



Golden Lime Public Company Limited

การปลูกต้นไม้ การฟื้นฟู และการเพิ่มพื้นที่สีเขียวจากการใช้ประโยชน์ที่ดิน
ตามประธานบัตรที่ 32517/16065 เขาขาว

5. Organizing and collaborating with other organizations to enhance biodiversity, engaging stakeholders, expanding green spaces, and promoting sustainable ecosystems.

Information on other environmental management

https://www.goldenlime.co.th/Managing_biodiversity.asp?lang=E



The company-initiated activities aimed at enhancing biodiversity and planted trees to mitigate pollution, working alongside community leaders, residents, and government agencies. This event took place on June 26, 2024, where trees and green spaces were established. A total of 250 trees were planted over an area exceeding 500 meters, featuring species such as Pink Trumpet Tree, Pradiphat Pine, and Indian Ashoka. Besides fostering environmental health and expanding green spaces to support the ecosystem and biodiversity, these trees serve as a dust barrier from the factory's production activities, helping to shield the community from dust exposure. This initiative is part of the company's commitment to responsible business practices that consider societal and environmental impacts.